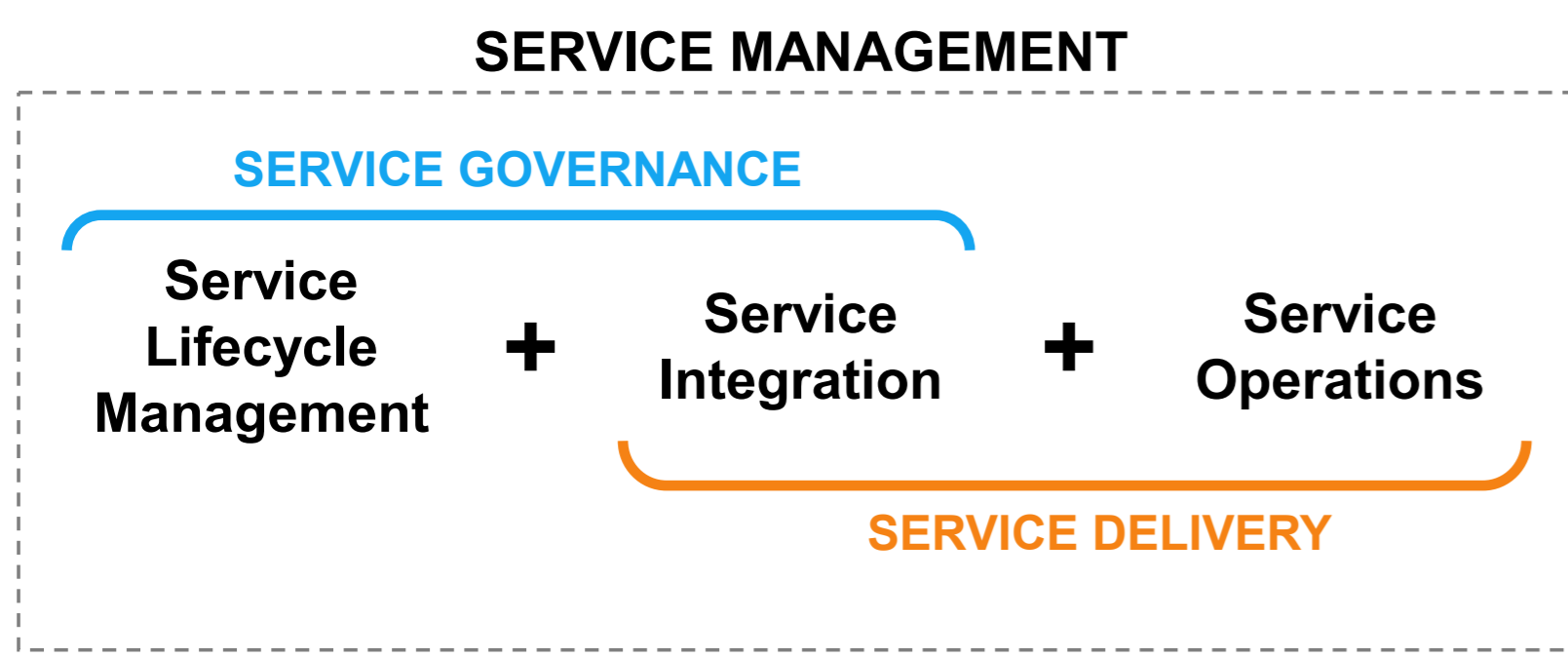
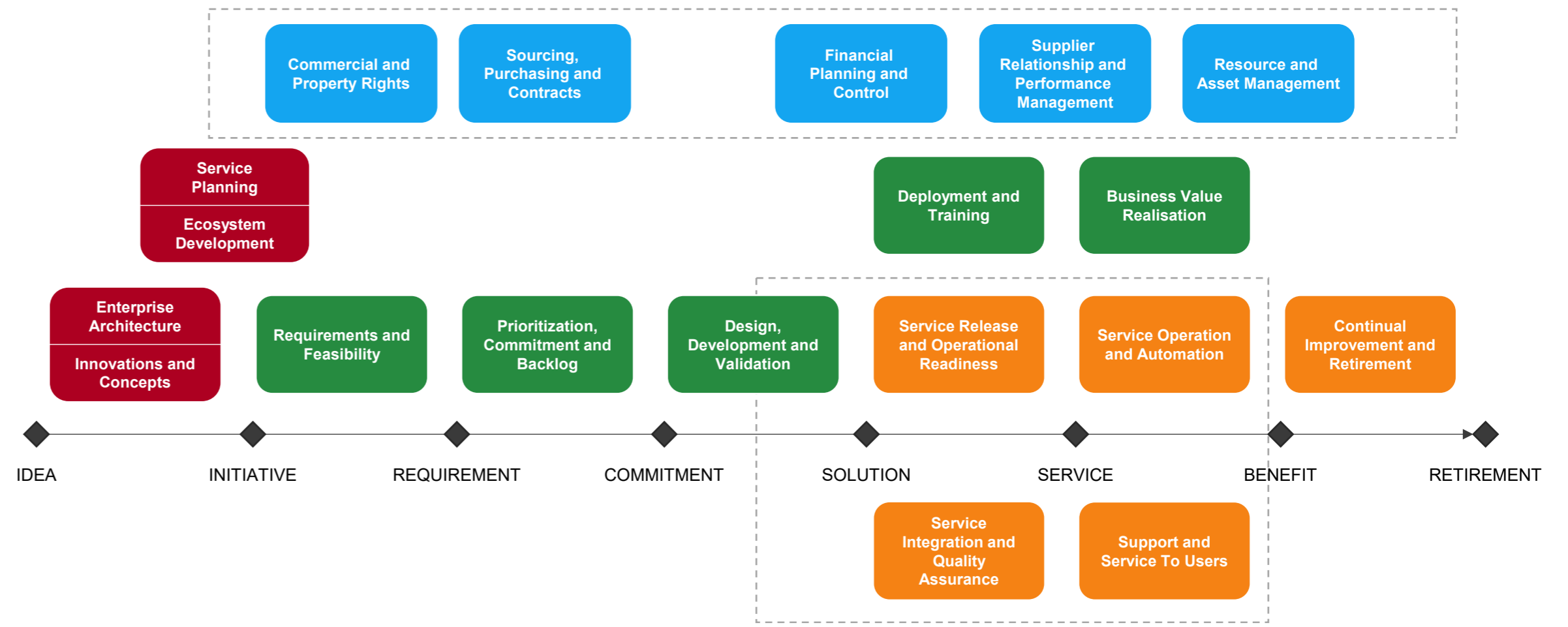


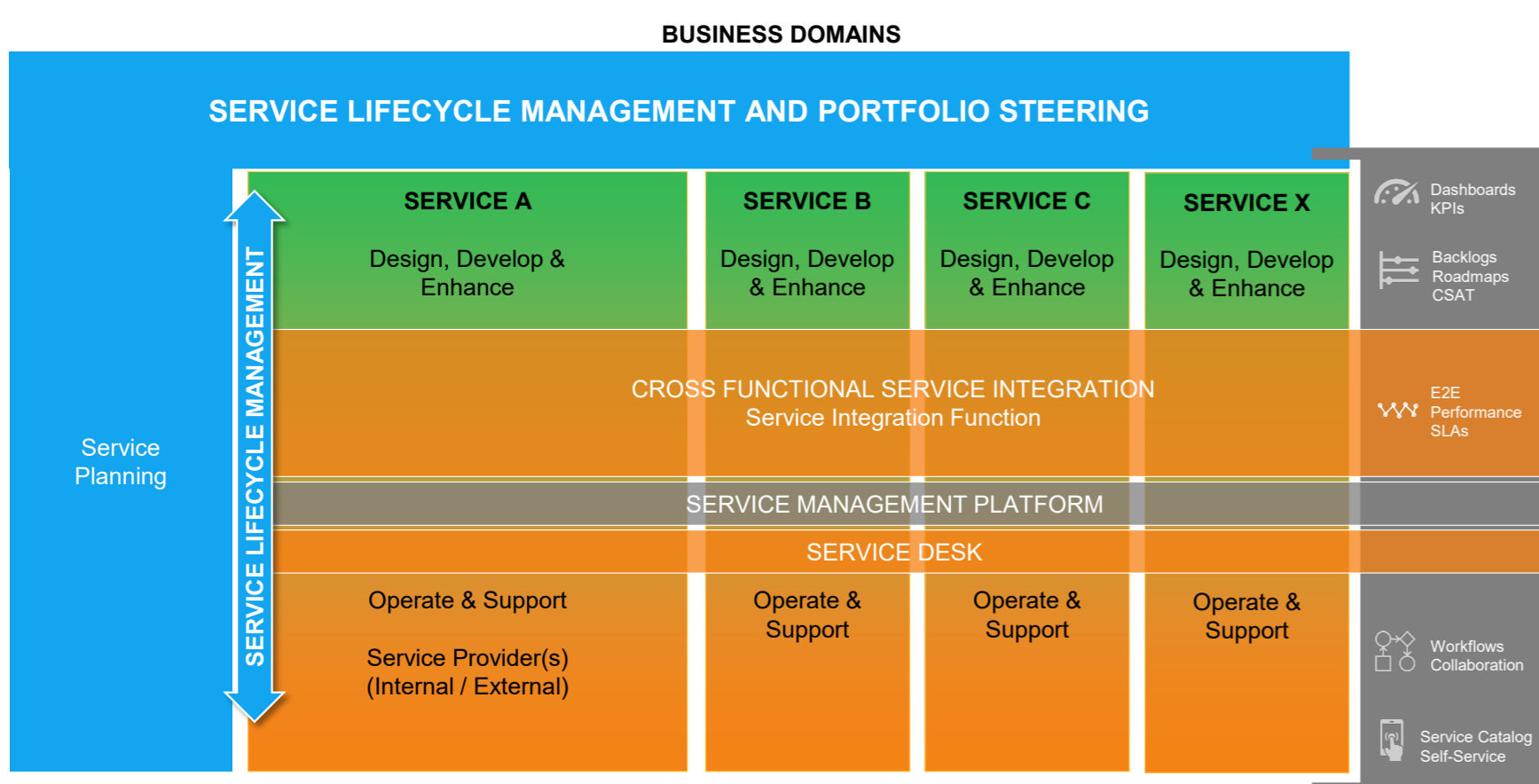
Service Lifecycle Management



Service Management in an End-to-End Flow

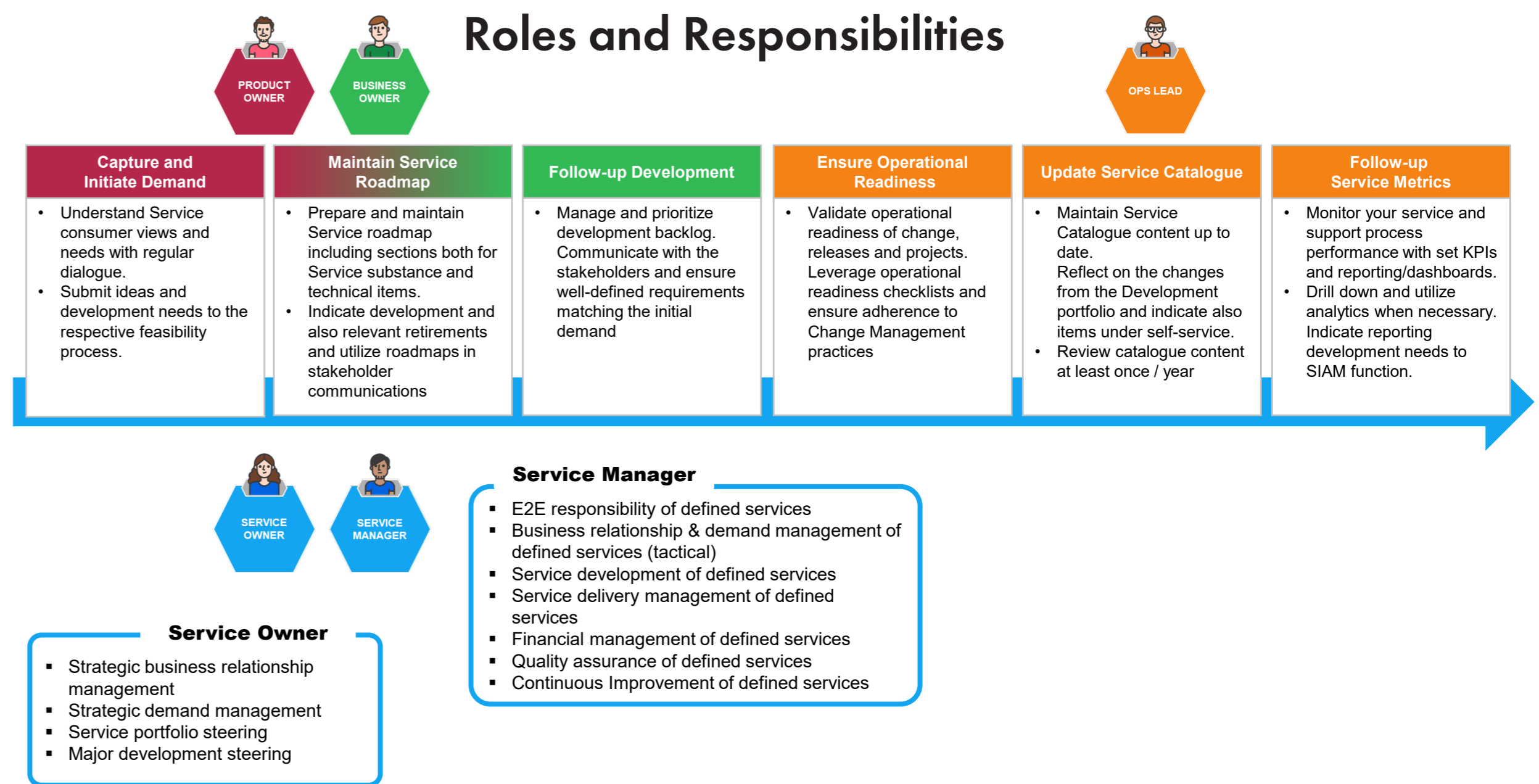


Core Elements of Service Management

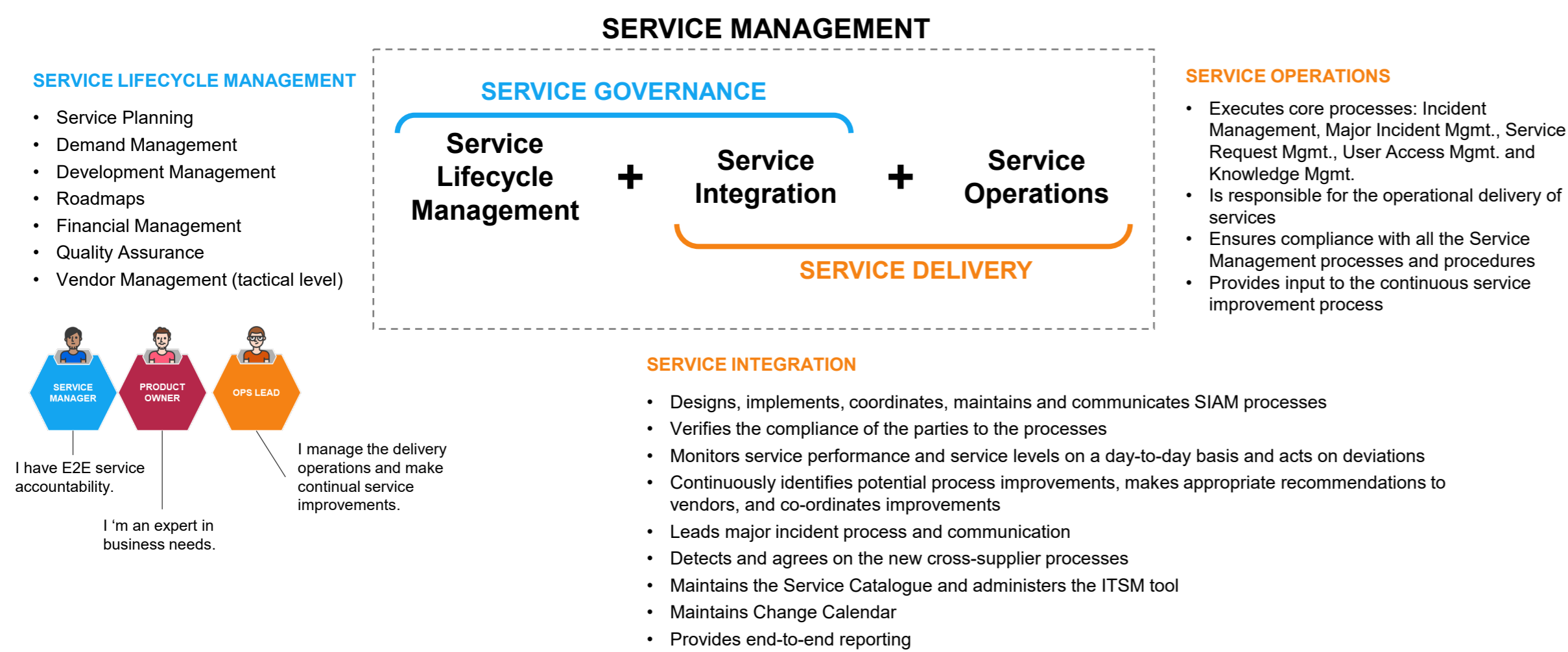


There may be many different service clusters with service management elements in various business domains. The vertical service clusters are managed by the Service Lifecycle Management and the horizontal elements are within the SIAM responsibilities.

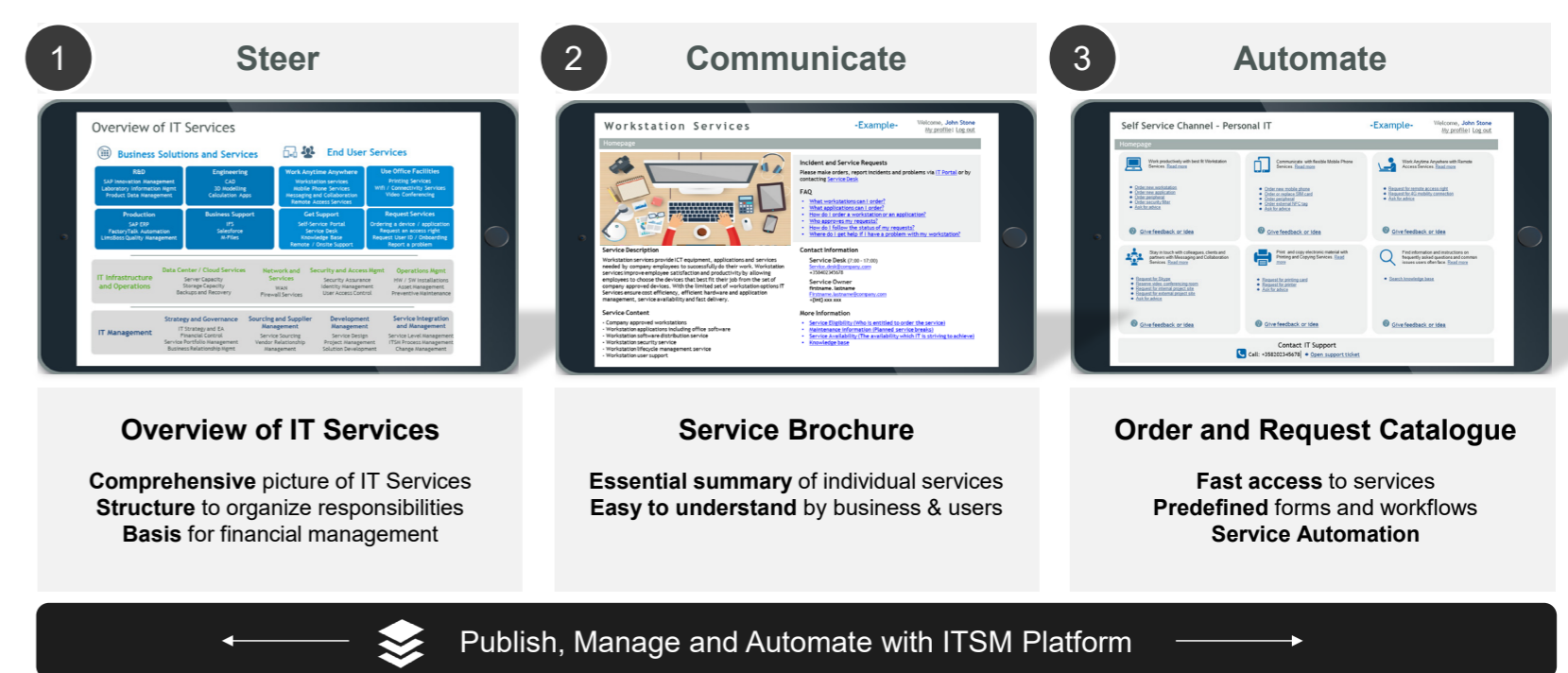
Roles and Responsibilities



Split of Responsibilities



3-Level Service Catalogue



End-to-End Service Management

